

<div><div><div>4F3R7S_V3</div><div></div></div></div>										1	2		3		4		5		6		7		8	
A															A									
B															B									
															C									
															D									

ITER Organization

INTERNAL USE

When received pursuant to a contract or agreement, the confidentiality clause therein shall be applicable.
When received during tender phase treat as confidential.

DRAWING TITLE

BKT_PARKING_FEATURE

FW CENTRAL BOLT SYSTEM

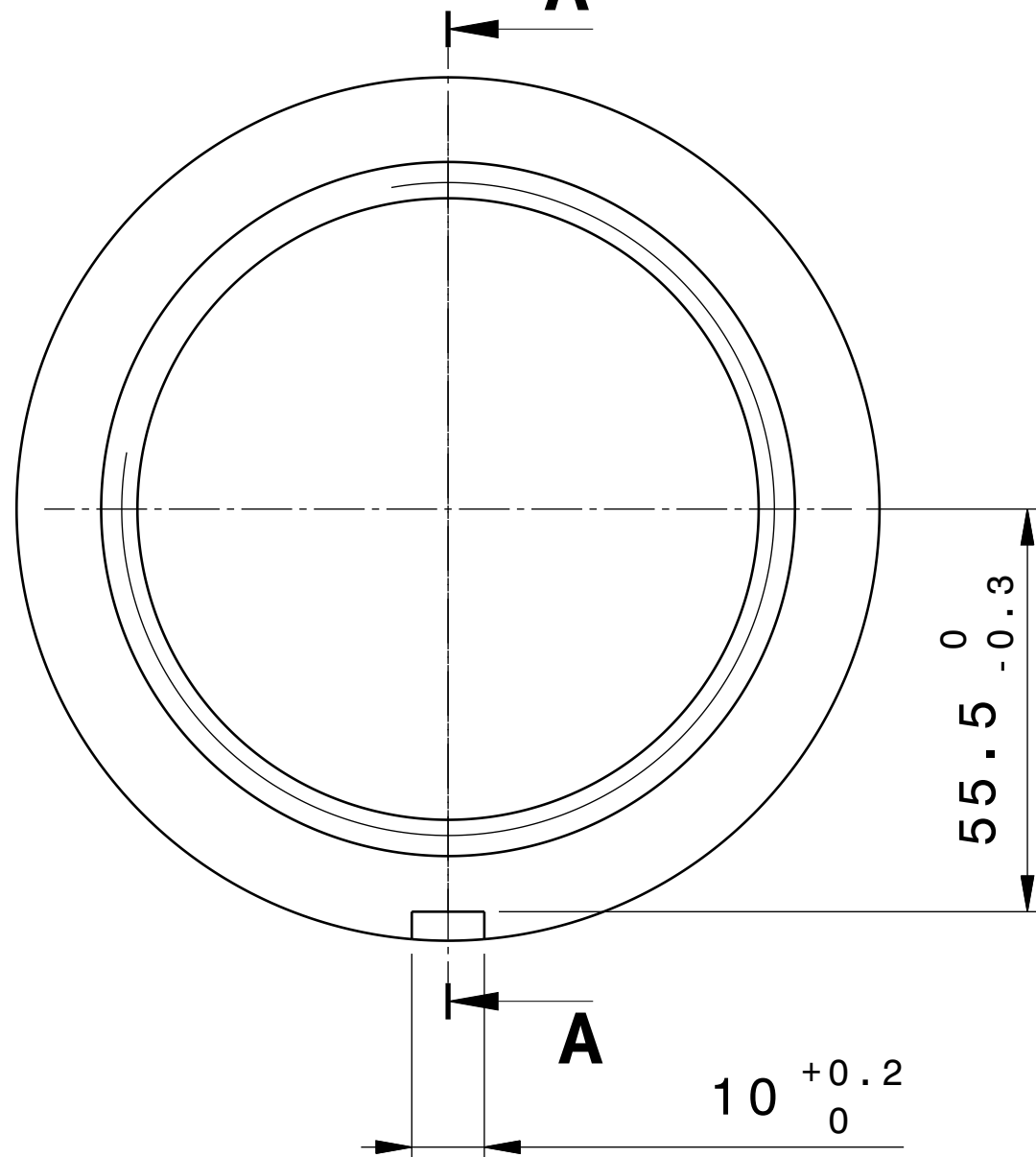
DOCUMENT TYPE

Part Drawing

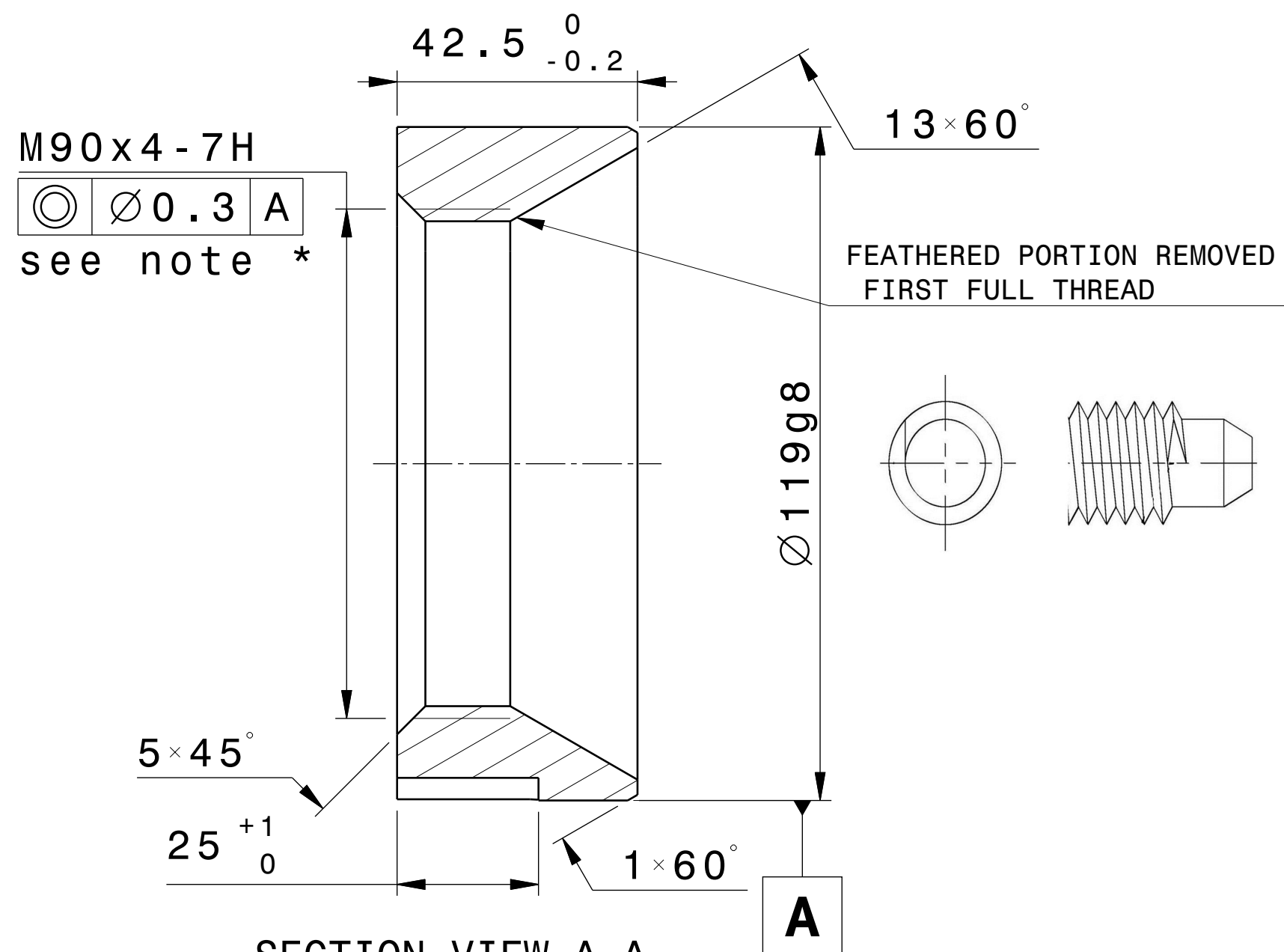
LEGAL OWNER

china EU india japan korea russia USA

A



FRONT VIEW



SECTION VIEW A-A

Note 1: General tolerances according to ISO 2768 cL unless specified.



Note 2: Material	SS304L	EN1.4307
------------------	--------	----------

Note 3: All dimensions could be found in 3D CAD model as referenced in title block.

Note 4: Component to be compliant with Annex B requirements.

Note 5: All external surfaces roughness shall be maximum Ra 6.3 micrometre unless specified.

Note 6: Break sharp edges.

DRW CAD ID			3RMZUR			APPROVED BY		ITER Organization			LEGAL OWNER			
LINKED EV5 PT ID			T4G9P9			ESCOURF		INTERNAL USE			<div> china EU india japan korea russia US</div>			
LINKED 3D ID			T4G9QQ			TECHNICAL REF								
PBS TITLE						DRAWN BY		When received pursuant to a contract or agreement, the confidentiality clause therein shall be applicable.						
Blanket System						ROUXD		When received during tender phase treat as confidential.						
First Wall Panels						SAFETY CLASS		DRAWING TITLE						
.						NSR		BKT_PARKING_FEATURE						
DATE OF ISSUE			PT MATURITY		PT VERSION	QUALITY CLASS		FW CENTRAL BOLT SYSTEM						
11Jun24			FD		- - C	QC-1		DOCUMENT TYPE						
DR STATUS			SCALE		PT STATUS			Part Drawing						
A			1:1		A									
THIRD ANGLE PROJECTION						FORMAT		PBS NUMBER		DRAWING NUMBER		SHEET	N°OF SHEETS	REVISION
						A3		16 FW - -		055958		02	02	- - B